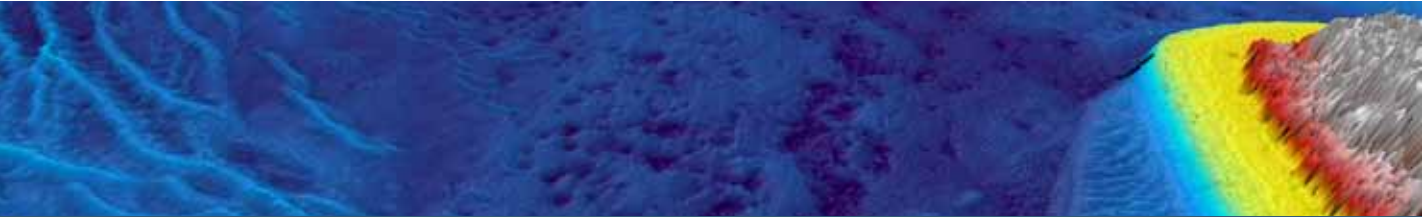


Airborne LiDAR Bathymetry (ALB) Services



Fugro ALB offers efficient, safe and reliable solutions for accurate bathymetric surveys in challenging waters.

Understanding survey needs

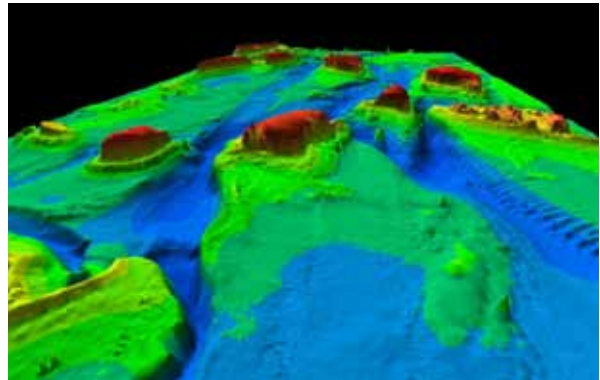
The challenges of managing sensitive marine and coastal zone regions demand accurate and seamless bathymetric and topographic information. Surveying shallow and complex waters can be difficult or hazardous. Fugro Airborne LiDAR Bathymetry (ALB) is able to work safely in those areas that are inefficient or hazardous to survey by vessel.



Global solutions from Fugro

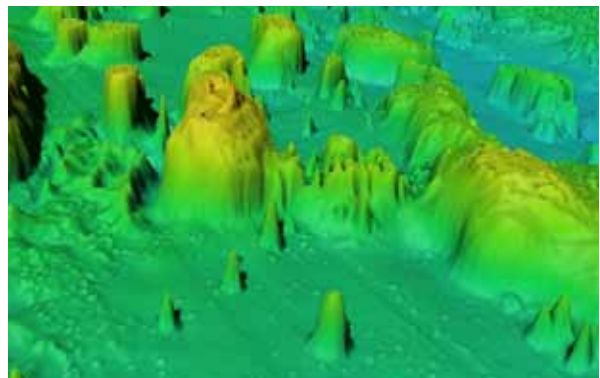
Fugro's team are equipped with the most reliable and efficient tools for accurate bathymetric and hyperspectral surveys in shallow, complex waters, coastal zones and reef areas. Our surveys support a wide range of applications, including:

- Nautical Charting
- Oil and Gas Industry Applications
- Renewable Energy Industry Applications
- Marine and Coastal Engineering
- Habitat Mapping
- Rapid Environmental Assessment
- Coastal Zone Management Applications



The Benefits of Working with Fugro

Fugro designs, builds, maintains and operates the most accurate and cost effective ALB systems in the world. Our in-house engineering capabilities provide continuous system improvements for emerging customer needs and fast response to in-field support or on-time project completion.



Airborne LiDAR Bathymetry (ALB) Services

Fugro Expertise

Our team's expertise in ALB survey is unmatched and complimented with the highest levels of recognised professional survey certification, ensuring proper project planning, sound project execution, and comprehensive QA/QC process. Since 1992 we have operated all major ALB sensors in the market today to complete hundreds of projects all over the world, Proven field procedures and routines based on our operational experience provide for accurate and efficient data collection and processing with low risk to the customer.



ALB and Multi Sensor Surveys

Fugro provides seamless and accurate digital bathymetric and topographic data. Fugro is able to deploy multiple systems simultaneously providing the following products:

- Digital depth and topographic data
- Digital Elevation Surfaces and Models
- Spatial GIS Products
- LiDAR Reflectivity
- Seabed Classification
- Hyperspectral Imagery
- Orthorectified Digital Imagery Mosaic



Design, Build and In Service Support

Fugro is the only company in the world that designs, builds, maintains and operates consistently accurate and cost effective ALB systems. Continuous upgrade and technological development of our ALB systems generates the highest levels of system reliability and extended Mean Time Between Failures, ensuring customer requirements are met. Fugro's in-house capabilities include:

- Hardware Design and Manufacture
- Software Development,
- Electronic and Mechanical Engineering,
- Laser and Optical Development
- Process Engineering

